



10925 BEAMER • HOUSTON, TEXAS • 77089
TEL: (281) 484-0706 • FAX (281) 484-8771

Every detail at Altmonte has been considered in planning these architecturally distinctive and pleasing apartment homes. Designed with convenience and comfort in mind, and built to European-quality standards, residents enjoy calling Altmonte home.

COMMON AREA FEATURES

- Video Library
- Outdoor Grills
- Picnic Areas
- Swimming Pool
- Controlled Access Gates
- 24-hour Emergency Maintenance
- Professionally Managed

INTERIOR FEATURES

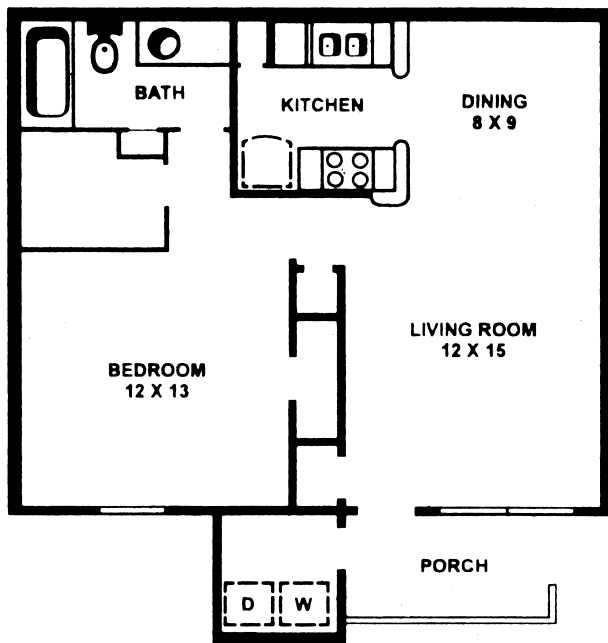
(Features will vary by individual apartment home)

- Frost Free Refrigerators
- Full Sized Washer/Dryers
- Ceiling Fans In Bedrooms
- Cable TV Connections
- Private Balconies/Patios
- High Speed Internet
Access Available

*Square footage on all plans are approximate

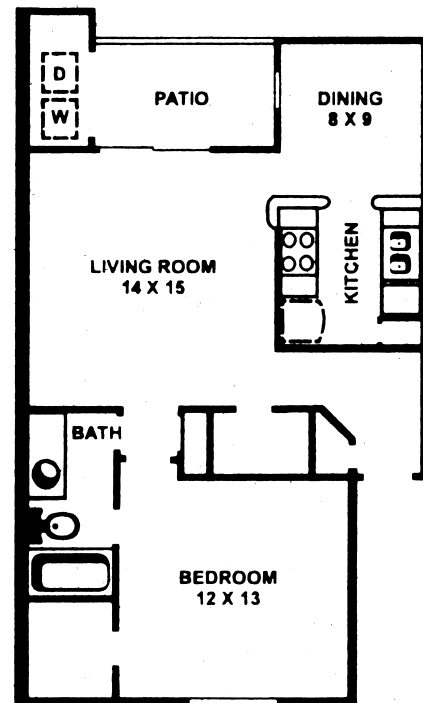
Altmonte

10925 BEAMER • HOUSTON, TEXAS • 77089
TEL: (281) 484-0706 • FAX (281) 484-8771



Plan A

1 BEDROOM / 1 BATH
712 SQ.FT.

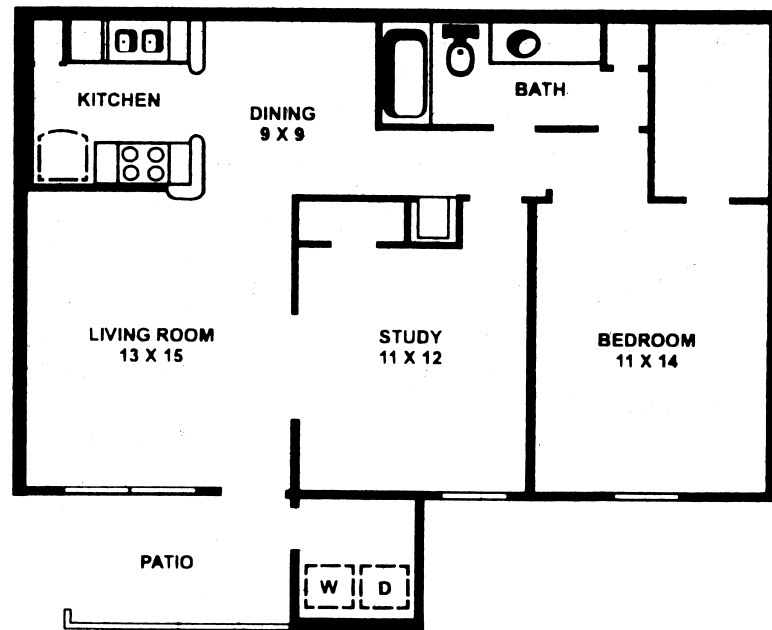
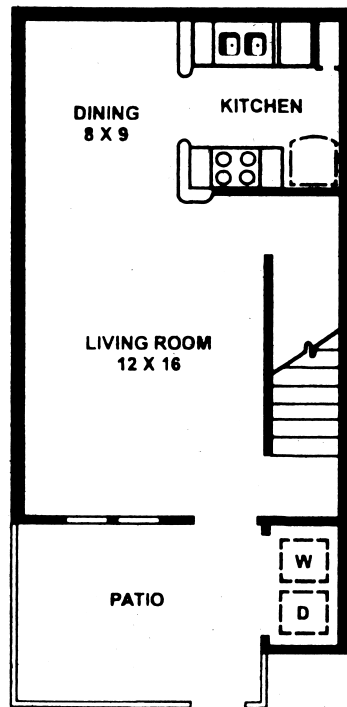
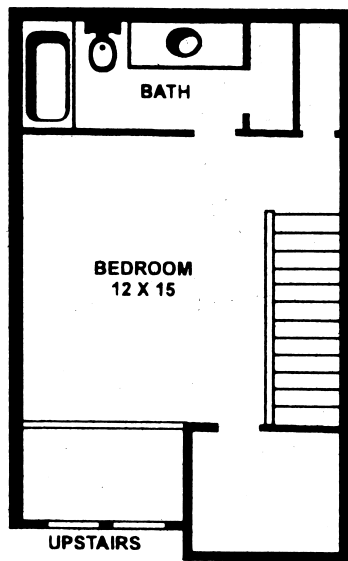


Plan B

1 BEDROOM / 1 BATH
778 SQ.FT.

Altmonte

10925 BEAMER • HOUSTON, TEXAS • 77089
TEL: (281) 484-0706 • FAX (281) 484-8771



Plan C

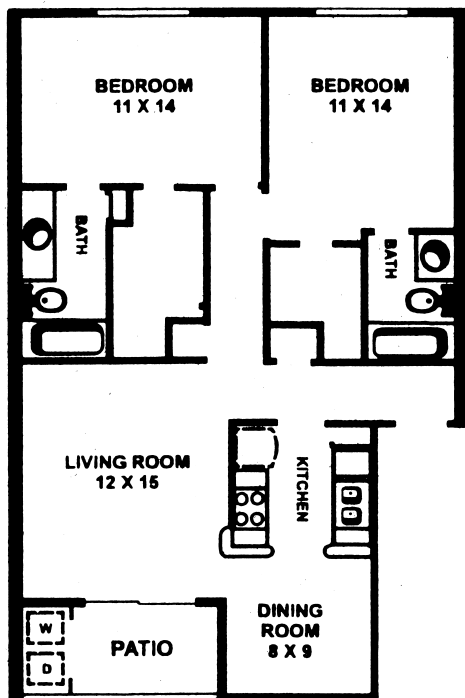
1 BEDROOM / 1 BATH / STUDIO
838 SQ.FT.

Plan D

1 BEDROOM / 1 BATH / STUDY
904 SQ.FT.

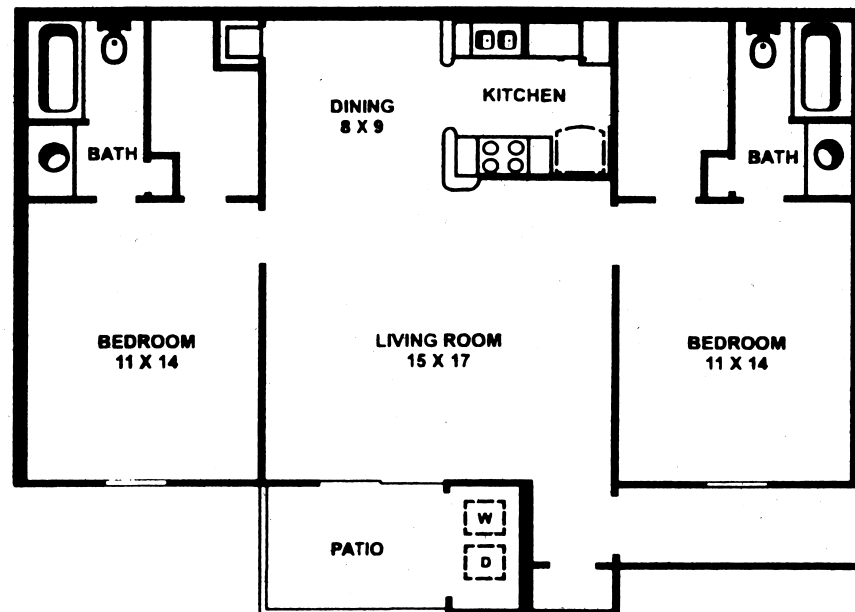
Altmonte

10925 BEAMER • HOUSTON, TEXAS • 77089
TEL: (281) 484-0706 • FAX (281) 484-8771



Plan E

2 BEDROOM / 2 BATH
1012 SQ.FT.



Plan F

2 BEDROOM / 2 BATH
1024 SQ.FT.

